

规格

设计

主体由两个螺纹部件组成，不锈钢过滤器。

连接

法兰连接

DN15 ... DN300, PN16/200PSI, PN25
PN16, DN65, 150LB/300LB 4孔执行

螺纹连接

1/4" ... 3"

安装位置

按需求安装，最好垂直或者水平安装。
请参考介质流向

压力范围

法兰连接

PN16/200PSI/150LB
PN25
PN40/300LB

螺纹连接

PN40/800PSI

温度范围

-40°C - +300°C

材料

法兰连接

阀体: WCB
CF8
CF8M

螺纹连接

阀体: CF8
CF8M

滤网: 304

Specification

DESIGN

Strainer made of stainless steel.
Body consists of two screwed parts.

CONNECTION

Flanged connection

DN15 ... DN300, PN16 drilled.
Flange PN16, DN65, 150LB/300LB will
be delivered in 4-hole execution!

Threaded connection

Rp1/4" ... Rp3"

MOUNTING POSITION

As desired, preferably for horizontal or vertical
mounting.
Please refer to flow direction.

NOMINAL PRESSURE

Flange connection:

PN16/200PSI/150LB
PN25
PN40/300LB

Threaded connection:

PN40/800PSI

TEMPERATURE RANGE

-40°C ... +300°C

MATERIAL

Flange connection:

Body: WCB
CF8
CF8M

Threaded connection:

Body: CF8
CF8M

Screen: 304

型号:
YA

Y型过滤器

PN16/200PSI/150LB

PN25

PN40/800PSI/300LB

WCB

CF8

CF8



Type:
YA

Y type strainer

PN16/200PSI/150LB

PN25

PN40/800PSI/300LB

WCB

CF8

CF8M

以上信息仅供参考，本公司保留修改的权利，恕不另行通知

The above information is intended for guidance only
and the company reserves the right to change any
date herein without prior notice

举例说明： 比如 YA4235115
=Y型过滤器, 80目, WCB/304, 800PSI, G螺纹, DN25

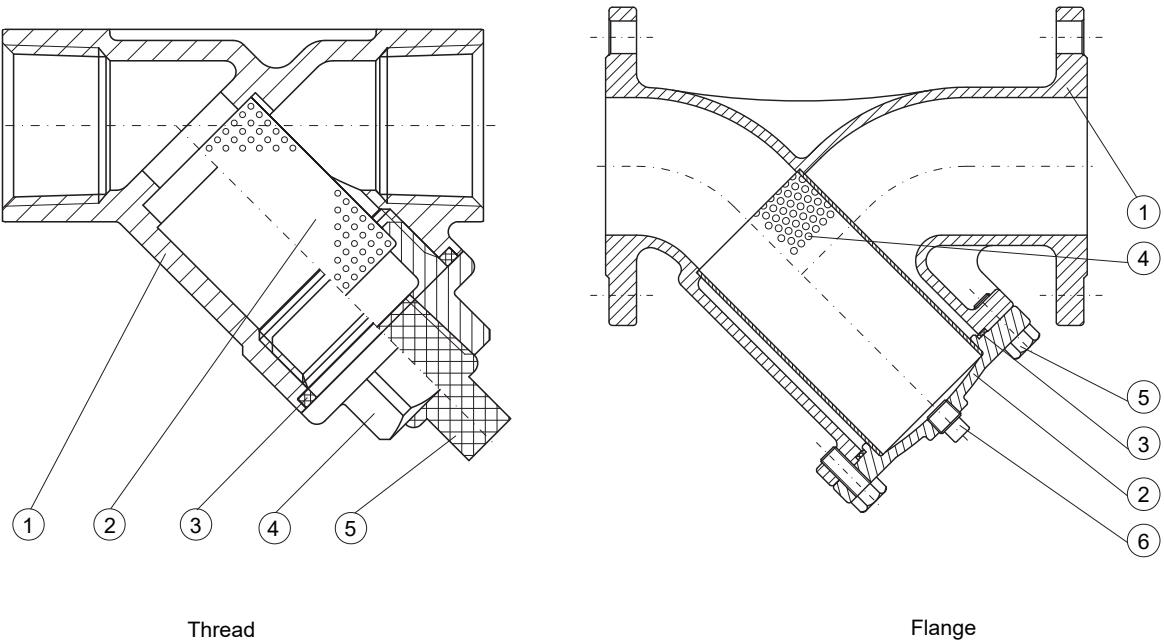
过滤器

1.字符 产品	2.字符 目	3+4.字符 阀体/内件	5.字符 压力标准	6.字符 连接	7 + 8.字符 口径
YA=Y型过滤器	1=20目 2=40目 3=60目 4=80目	23=WCB/304 33=CF8/304 44=CF8M/316	3=PN16/200PSI/150LB 4=PN25 (*法兰连接) 5=PN40/800PSI/300LB (*螺纹连接)	1=G螺纹 6=国标法兰 8=NPT螺纹 M=美标法兰	11=1/4" 16=1-1/4" 12=3/8" 17=1-1/2" 13=1/2" 18=2" 14=3/4" 19=2-1/2" 15=1" 20=3"

Ordering example:e.g. YA4235115
= Y type strainer, WCB/304, 800PSI, G thread, DN25
Strainer

A. Product	B. Mesh	C+D. Body/Internal	E. Pressure criteria	F. Connection	G+H. Size
YA=Y type strainer	1=20 Mesh 2=40 Mesh 3=60 Mesh 4=80 Mesh	23=WCB/304 33=CF8/304 44=CF8M/316	3=PN16/200PSI/150LB 4=PN25 (*Flange) 5=PN40/800PSI/300LB (*Thread)	1=G Thread 6=GB Flagne 8=NPT Thread M=ASME Flange	11=1/4" 16=1-1/4" 12=3/8" 17=1-1/2" 13=1/2" 18=2" 14=3/4" 19=2-1/2" 15=1" 20=3"

零件说明/Parts list



螺纹

序号	描述	材质
1	阀体	CF8 CF8M
2	滤网	304 316
3	垫片	PTFE
4	阀帽	CF8M
5	堵头	304

法兰

序号	描述	材质
1	阀体	WCB CF8 CF8M
2	阀盖	CF8M
3	垫片	PTFE
4	滤网	304 316
5	阀盖螺栓	不锈钢
6	堵头	304

Thread

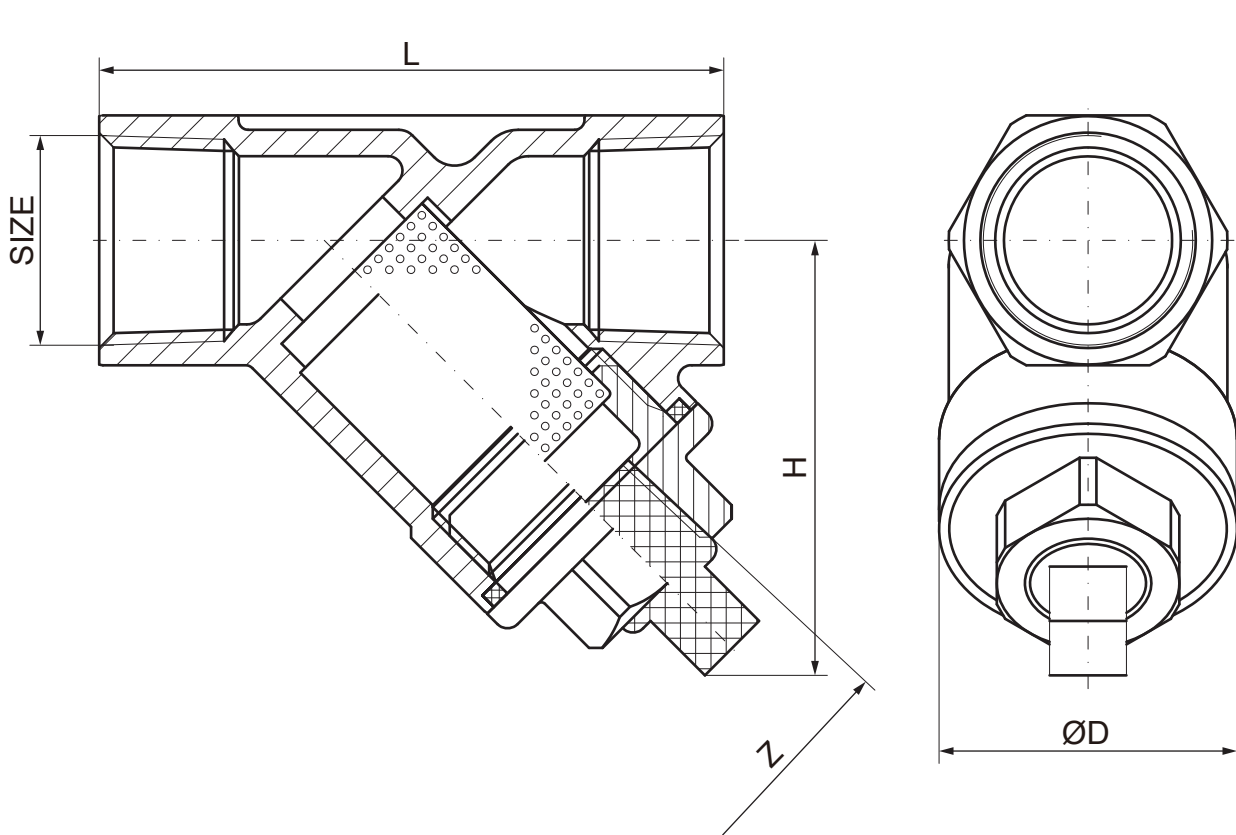
NO.	Description	Material
1	Body	CF8 CF8M
2	Screen	304 316
3	Gasket	PTFE
4	Cap	CF8M
5	Gag	304

Flange

NO.	Desciption	Material
1	Body	WCB CF8 CF8M
2	Bonnet	CF8M
3	Gasket	PTFE
4	Screen	304 316
5	Bonnet bolt	Stainless steel
6	Gag	304

尺寸/Dimension

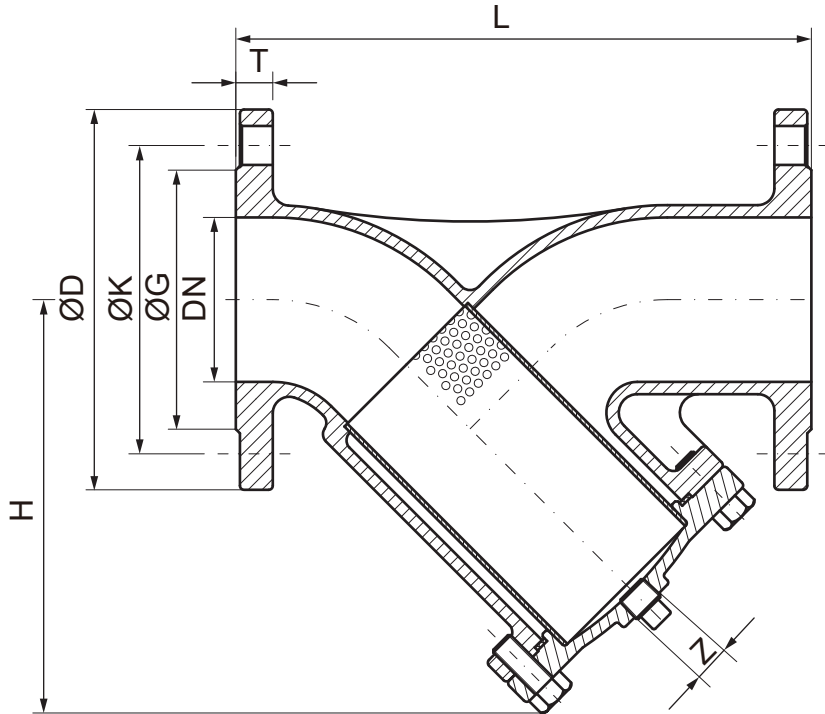
Thread
PN40/800PSI/300LB



SIZE	DN	L	ØD	Z	H	kg
1/4"	8	65	31	1/4	45	0.25
3/8"	10	65	31	1/4	45	0.25
1/2"	15	65	31	1/4	45	0.26
3/4"	20	80	36	1/4	53	0.38
1"	25	90	45	1/2	68	0.68
1-1/4"	32	105	50	1/2	71.5	0.88
1-1/2"	40	120	59	1/2	80	1.36
2"	50	140	75	1/2	97	2.5
2-1/2"	65	170	120	1/2	120	4.85
3"	80	195	140	1/2	140	7.3

尺寸/Dimension

Flange
PN16/200PSI/150LB
PN25



SIZE	DN	L	ØG	PN16/200PSI		PN25		H	T	Z	kg
				ØD	ØK	ØK	ØK				
1/2"	15	130	45	95	65	95	65	90	14	-	2.8
3/4"	20	150	58	105	75	105	75	82	16	-	3.57
1"	25	160	68	115	85	115	85	110	16	-	5.31
1-1/4"	32	180	78	140	100	140	100	110	16	1/2	5.95
1-1/2"	40	200	88	150	110	150	110	130	16	1/2	8.16
2"	50	230	102	165	125	165	125	145	18	1/2	11.82
2-1/2"	65	290	122	185	145	185	145	175	18	1/2	17.54
3"	80	310	138	200	160	200	160	196	20	3/4	20.9
4"	100	350	158	220	180	235	190	250	20	1/2	23.8
5"	125	400	188	250	210	270	220	285	22	3/4	32.0
6"	150	480	212	285	240	300	250	330	22	3/4	44.0
8"	200	600	268	340	295	360	310	400	24	3/4	71.0
10"	250	730	320	405	355	425	370	520	26	3/4	128.0
12"	300	850	378	460	410	485	430	525	26	3/4	204.0